



## Lampadaire solaire

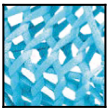
Lampadaire solaire - Structure aluminium et tressage tube polyester

### Collection

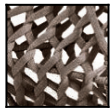
Yakimour



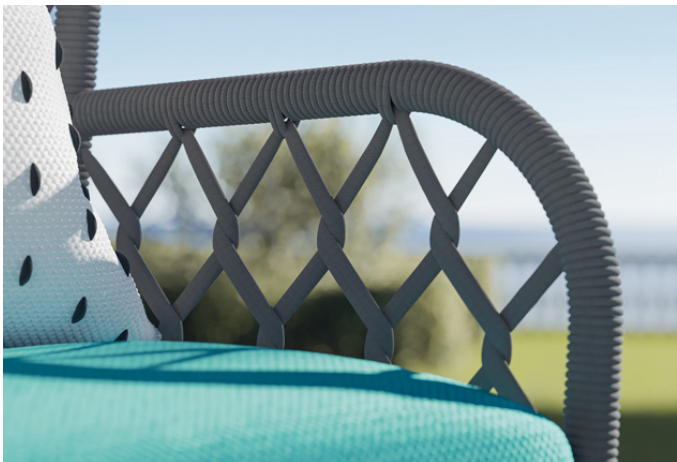
### Structure



Turquoise  
YA26



Light grey  
YA28



## Caractéristiques

Dimensions : 47 × 47 × 160 cm

Poids brut : 0 kg

Poids net : 24 kg

Volume : 0.4 m<sup>3</sup>

Structure : Aluminium laqué

Matière : Polyester tissé